

THEOS MINI A/W



Part number	06222596
Lampholder:	LED
Light Source:	LED
Wattage:	35 W
Finish:	AN-96 / Anthracite gray / Textured
Insulation class:	II
Degree of protection:	IP66
IK-J-xxIP:	IK08 9J xx5
CRI:	70
Kelvin:	4000
Power factor:	$\text{COS}\phi \geq 0,9$
Optic:	Asymmetric Wide Reflector
Lightsource lumen output:	4304 lm
Luminaire lumen output:	3829 lm
L:	L80
B:	B10
Lifetime:	60000 h
Ta MIN luminaire:	-40°
Ta MAX luminaire:	45°



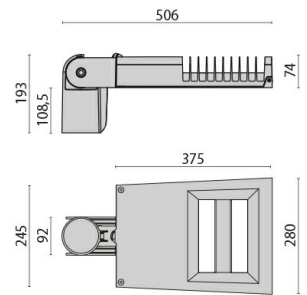
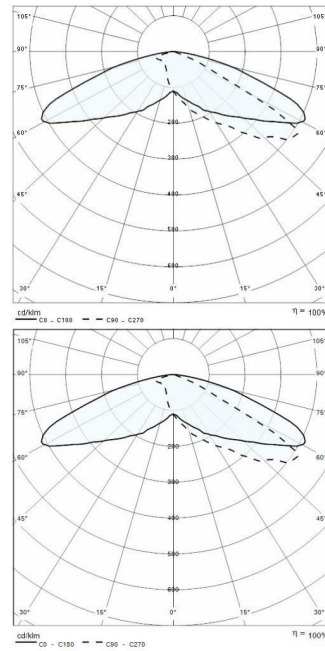
Description

Photometric data

Technical drawings

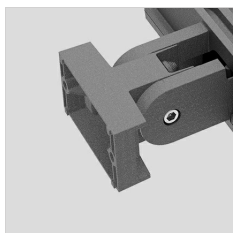
Series of LED street luminaires, comprising:

- Die-cast aluminium housing chemically pre-treated and painted with polyester powder coating
- Die-cast aluminium pole-mounting joint, painted grey, for pole \varnothing 60 mm or 76 mm
- Diffuser with integrated louvre in UV, heat stabilised, transparent technopolymer
- High-transparency polycarbonate lenses for best light transmission
- Asymmetrical optic
- Anti-aging silicone gasket with high resiliency
- Switch splitter automatically disconnects the power supply when the cable cover is opened
- Cable gland M20x1.5 for cables \varnothing 10- \varnothing 14 mm
- High efficiency electronic driver
- Light beam obtained by the combination of multiple LED modules
- Compliant with the UNI 10819 Standard and with the Italian regional laws on light pollution
- Stainless steel external screws
- The "SECURE LIGHT DISTRIBUTION" system guarantees uniform light distribution even in the remote case of LED failures
- Replaceable LED module
- 3000 K and 5000 K available upon request
- Photometric data measure according to UNI EN 13032-4 and IES LM-79-08



OPTIONAL ACCESSORIES

THEOS



14174796
Wall mount bracket THEOS



14077796
Hot-dipped galvanized wall angled
steel bracket, cataphoresis and
polyester powder